

# Heart Disease and Stroke Statistics

## 2015 Update



**American  
Heart  
Association** | **American  
Stroke  
Association®**



Additional charts may be downloaded directly from the online publication at:  
<http://circ.ahajournals.org/lookup/doi/10.1161/CIR.000000000000152>

Or at:  
[www.heart.org/statistics](http://www.heart.org/statistics)

The American Heart Association requests that this document be cited as follows:

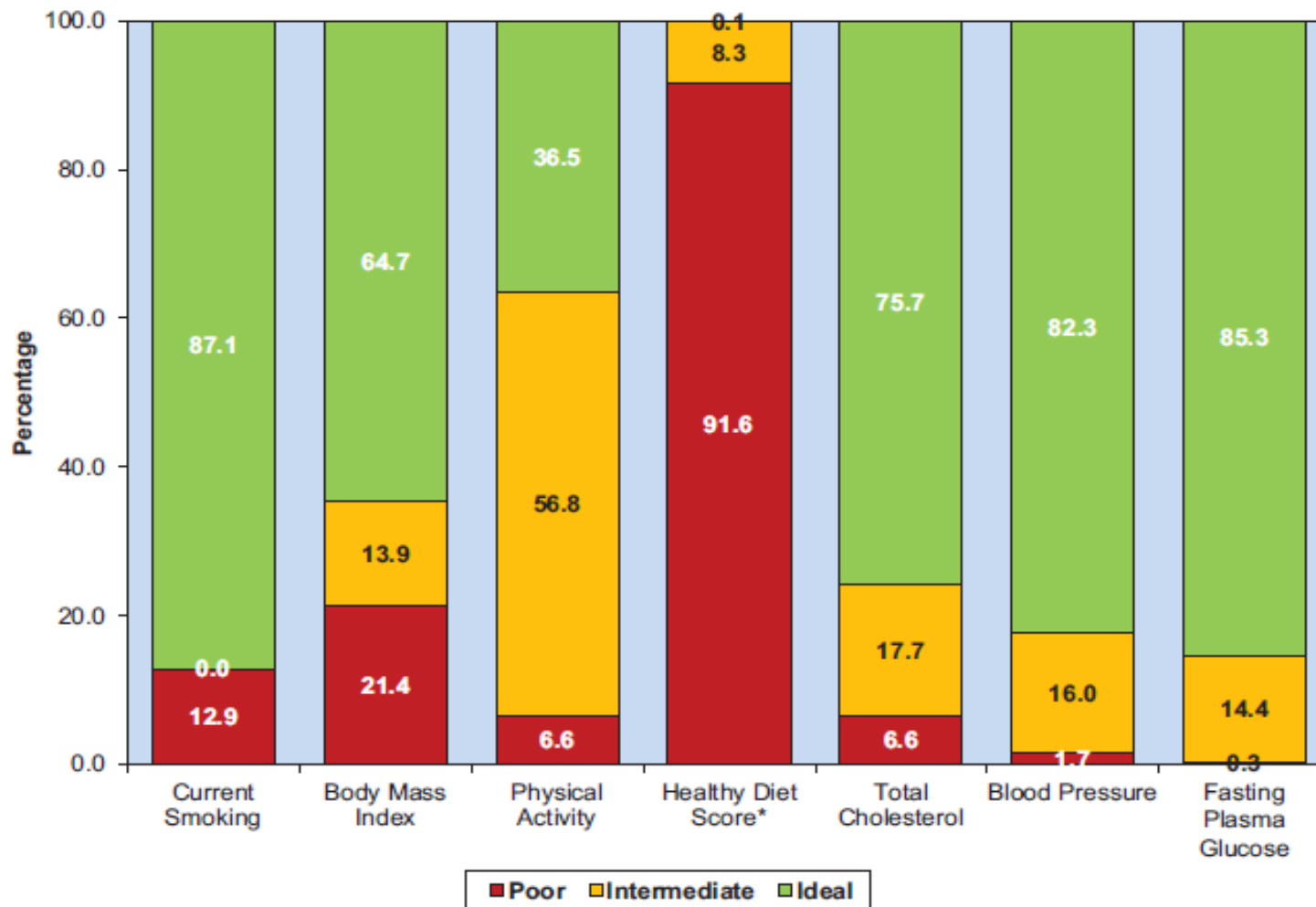
Mozaffarian D, Benjamin EJ, Go AS, Arnett DK, Blaha MJ, Cushman M, de Ferranti S, Després J-P, Fullerton HJ, Howard VJ, Huffman MD, Judd SE, Kissela BM, Lackland DT, Lichtman JH, Lisabeth LD, Liu S, Mackey RH, Matchar DB, McGuire DK, Mohler ER 3rd, Moy CS, Muntner P, Mussolino ME, Nasir K, Neumar RW, Nichol G, Palaniappan L, Pandey DK, Reeves MJ, Rodriguez CJ, Sorlie PD, Stein J, Towfighi A, Turan TN, Virani SS, Willey JZ, Woo D, Yeh RW, Turner MB; on behalf of the American Heart Association Statistics Committee and Stroke Statistics Subcommittee. Heart disease and stroke statistics—2015 update: a report from the American Heart Association [published online ahead of print December 17, 2014]. *Circulation*. doi: 10.1161/CIR.000000000000152.

If you have questions about statistics or any points made in the 2015 Statistical Update, please contact the American Heart Association National Center, Office of Science & Medicine at [statistics@heart.org](mailto:statistics@heart.org).

Please direct all media inquiries to News Media Relations  
at [inquiries@heart.org](mailto:inquiries@heart.org) or 214-706-1173.

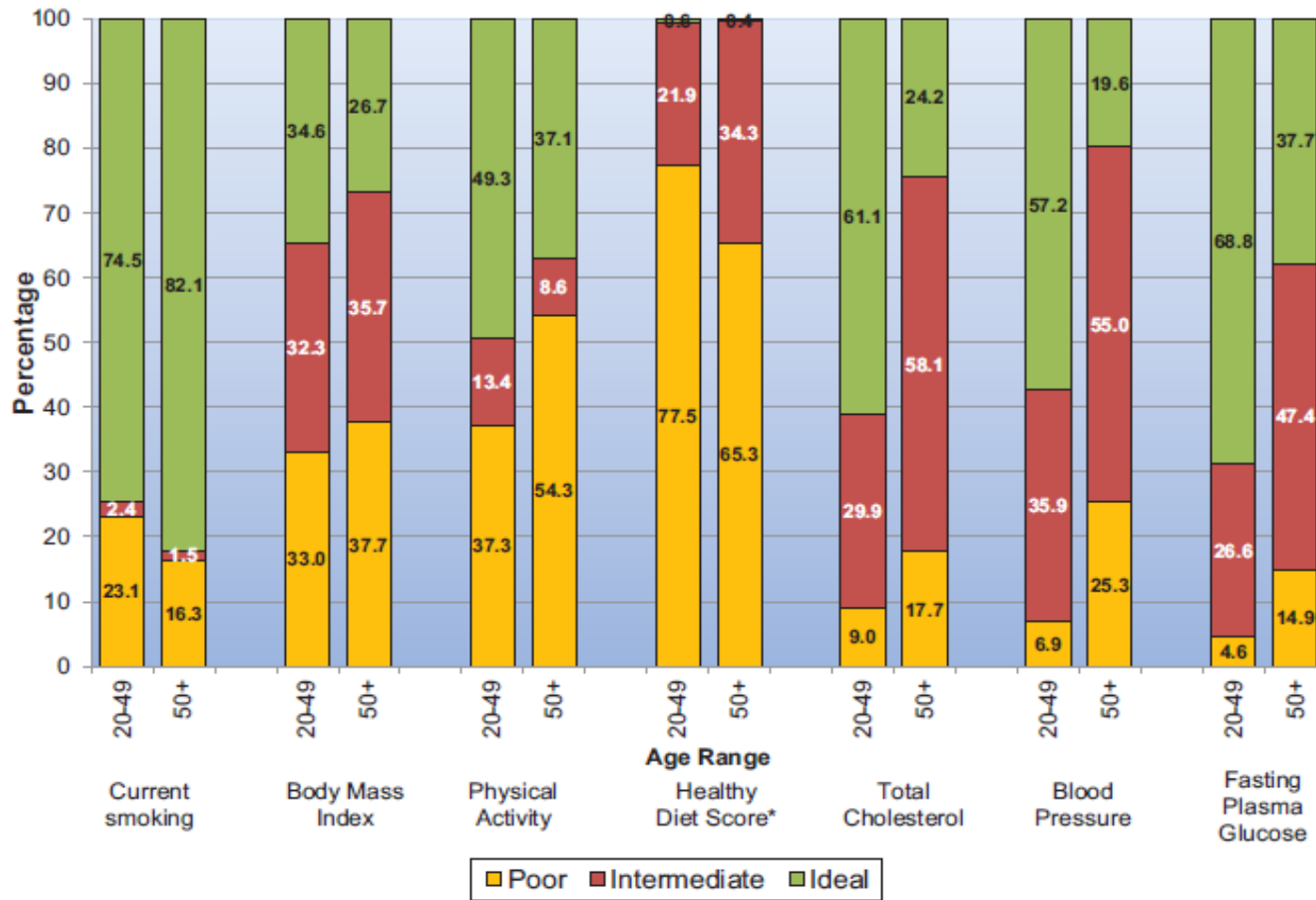


# Prevalence (unadjusted) estimates for poor, intermediate and ideal cardiovascular health, US children aged 12-19 years (NHANES 2011-2012)



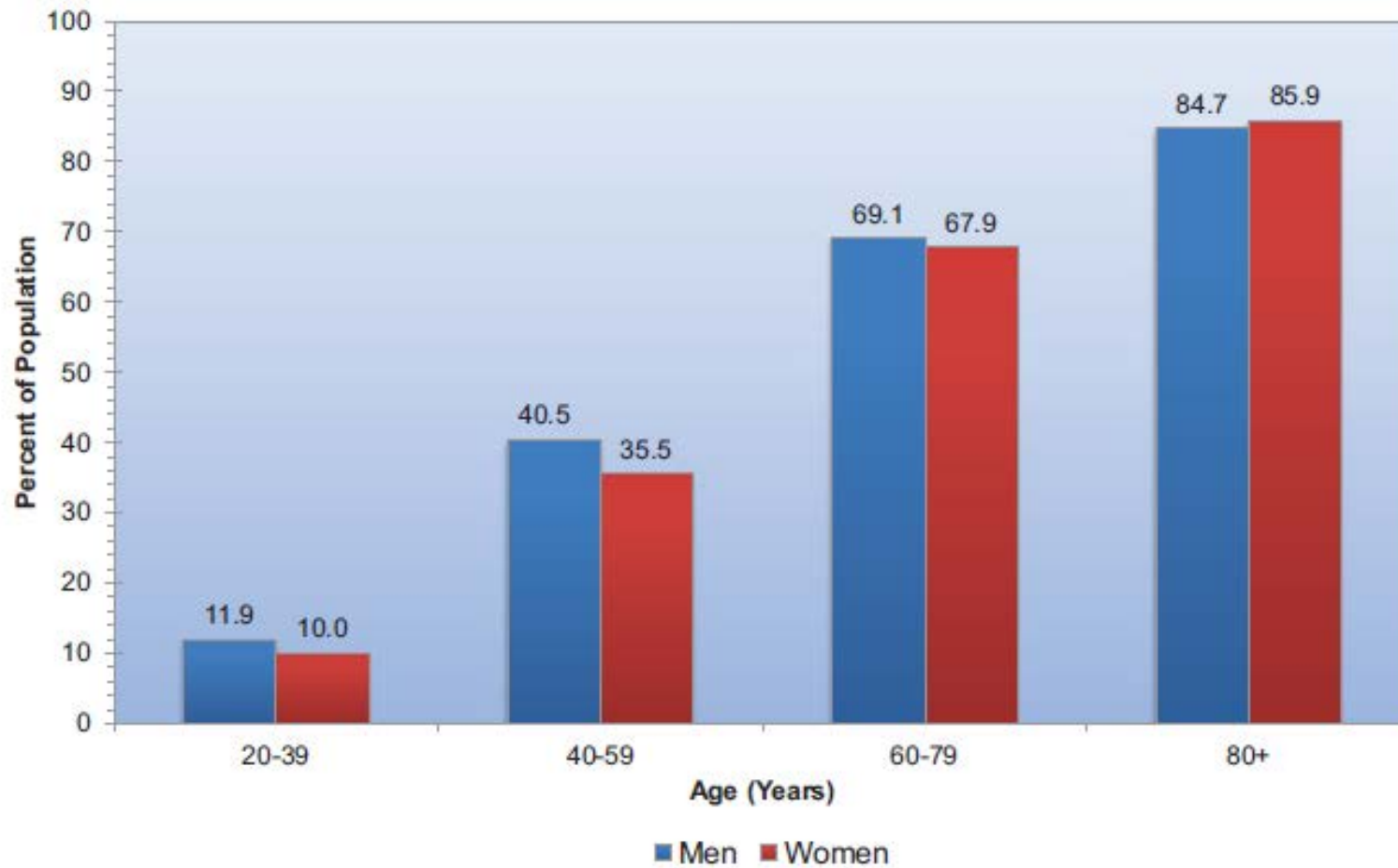
\*Healthy diet score data reflects 2009 to 2010 NHANES data.

# Age-standardized prevalence for poor, intermediate and ideal cardiovascular health, US adults ≥20 years of age (NHANES 2011-2012)

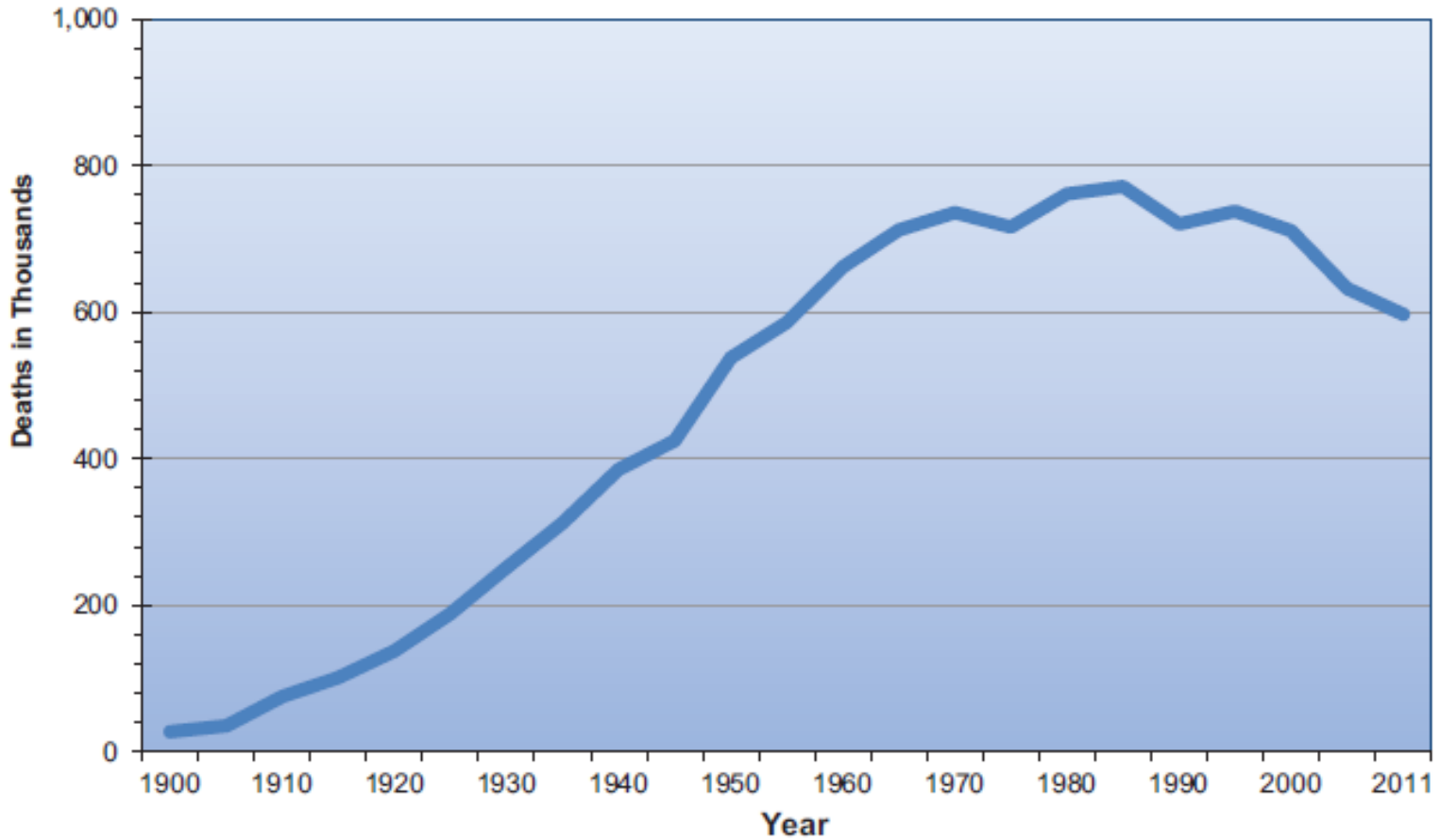


\*Healthy diet score data reflects 2009 to 2010 NHANES data.

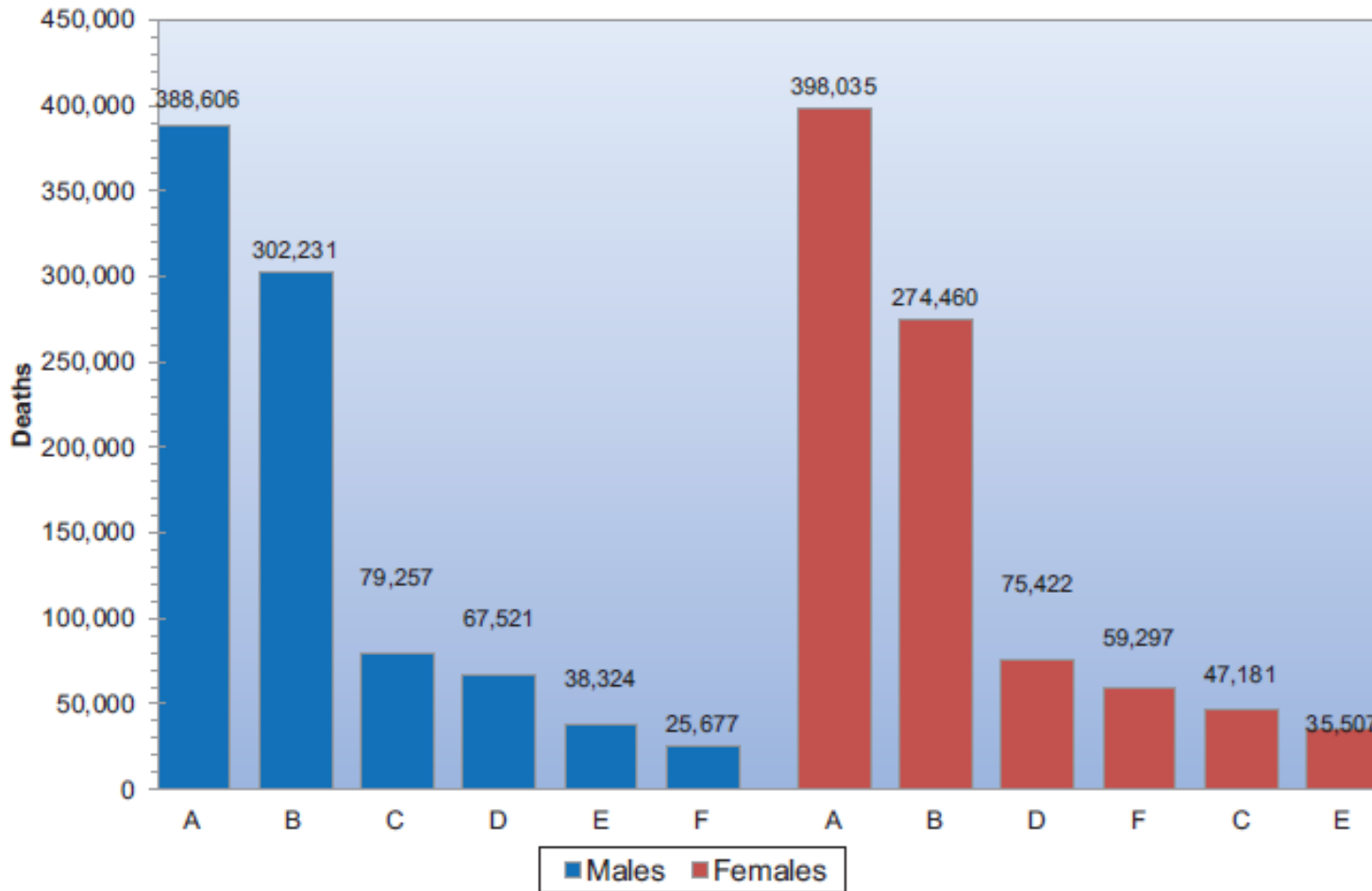
# Prevalence of CVD in adults $\geq 20$ years of age (NHANES: 2009–2012)



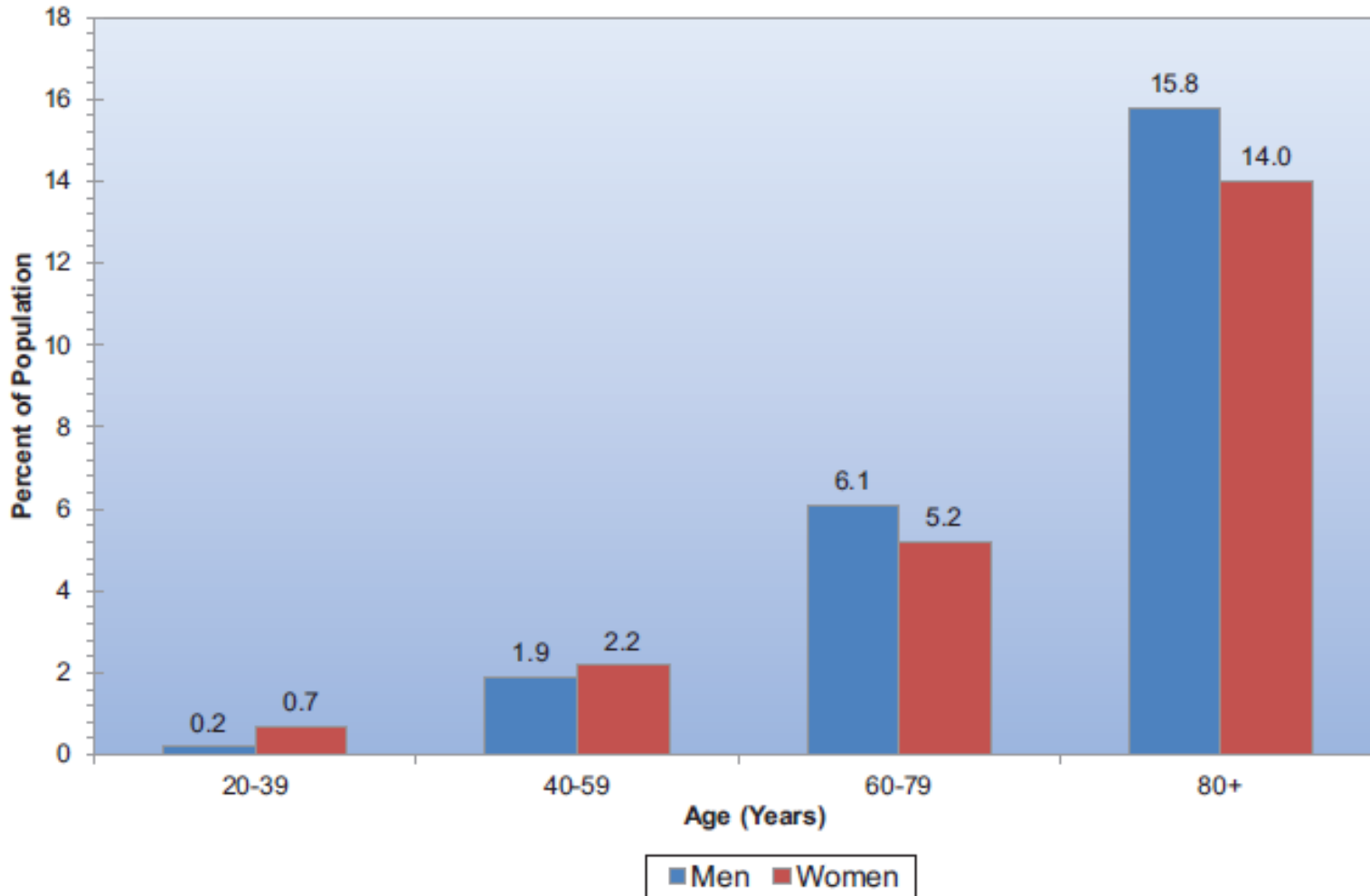
# Deaths due to diseases of the heart (United States: 1900–2011)



# CVD and other major causes of death (United States: 2011)

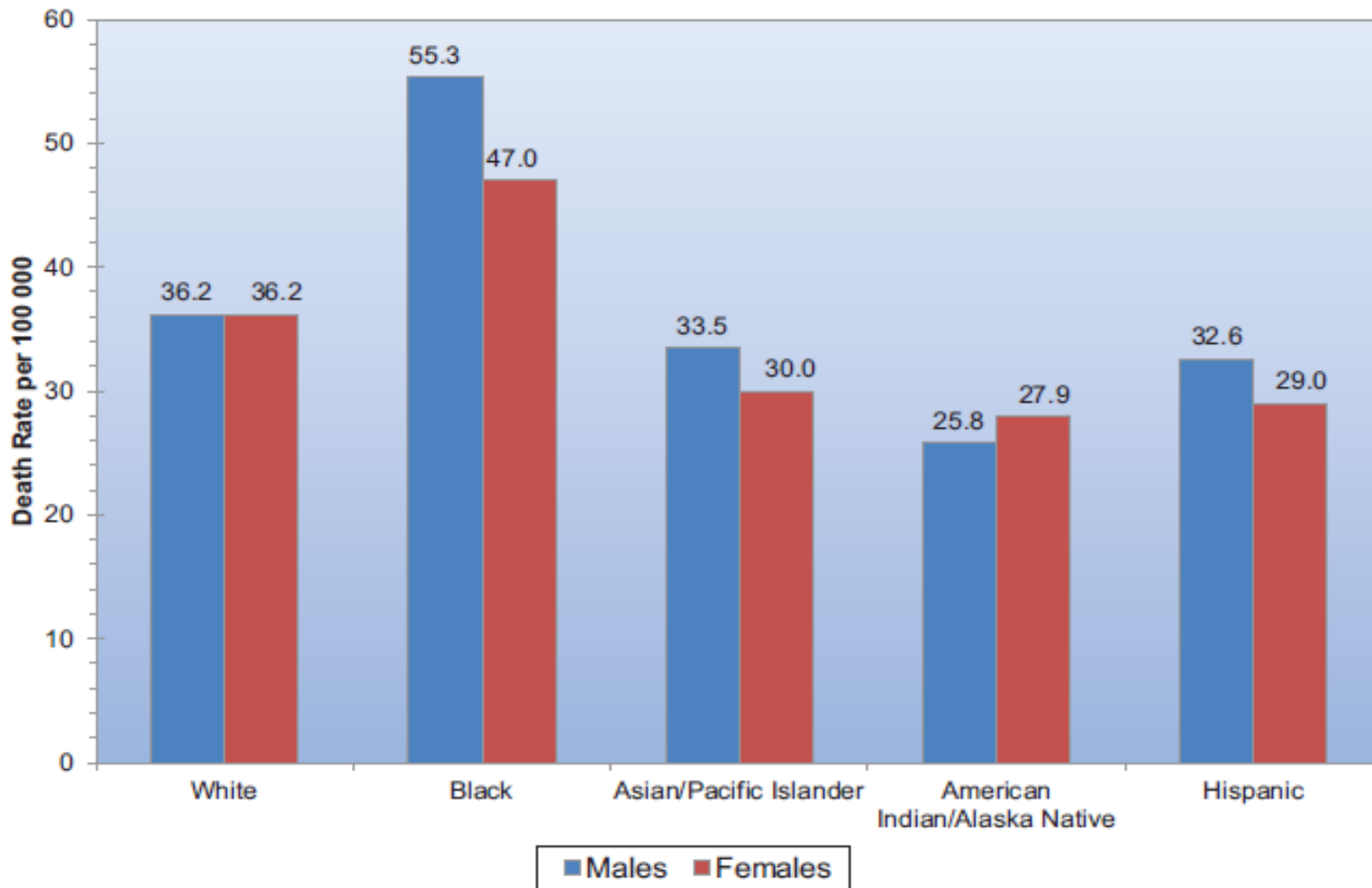


# Prevalence of Stroke (NHANES: 2009–2012)

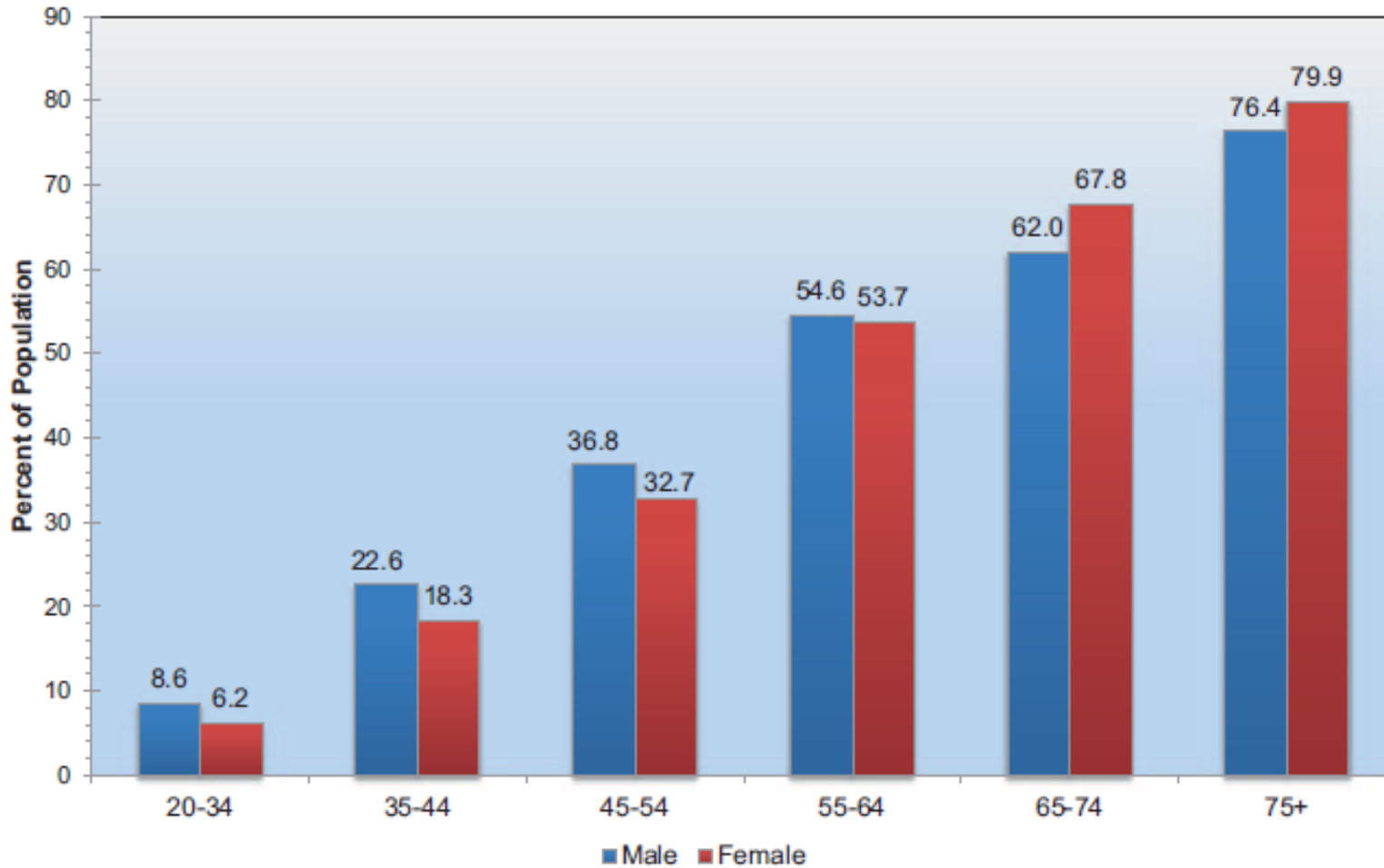




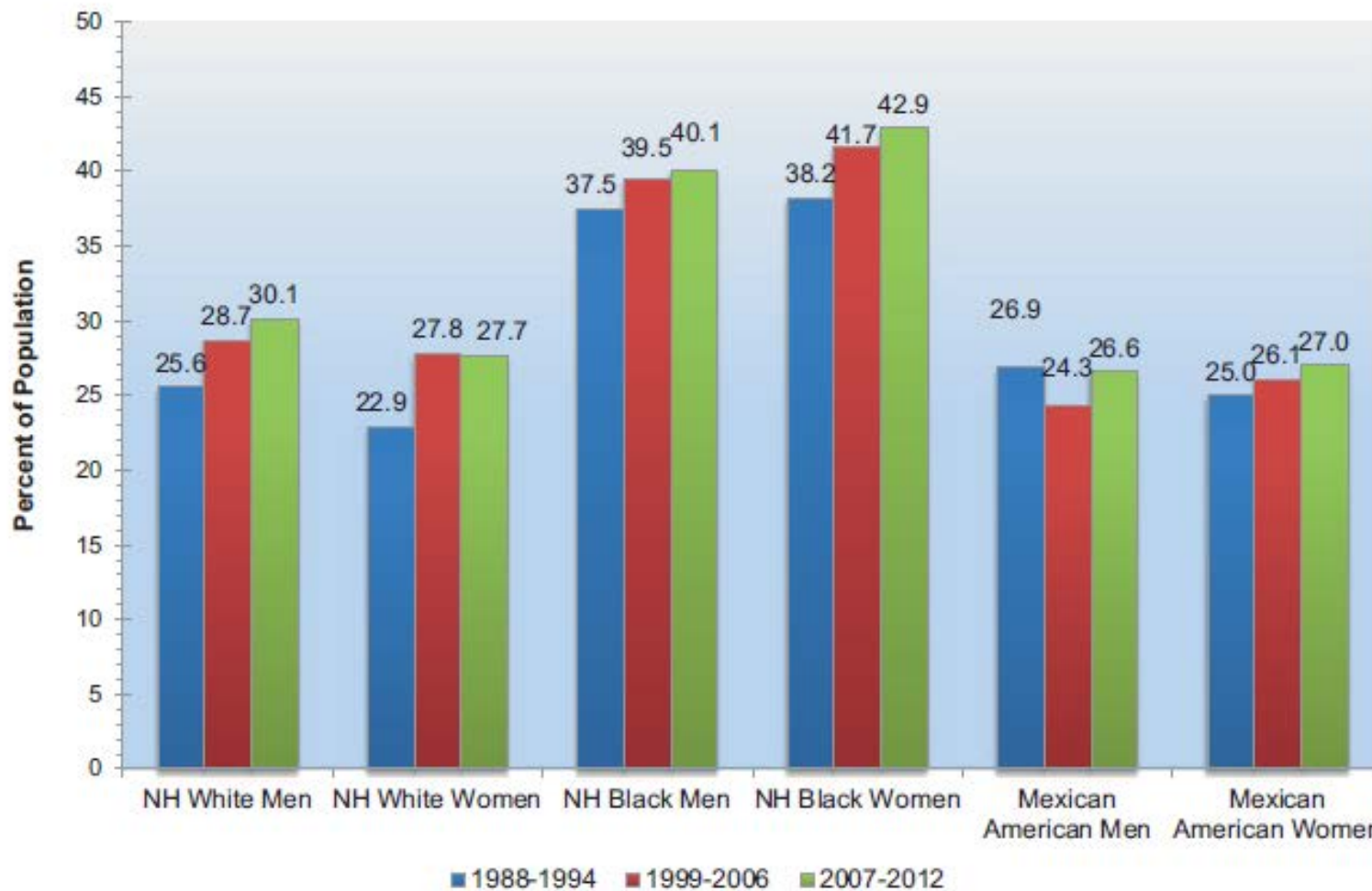
# Age-adjusted death rates for stroke, 2011



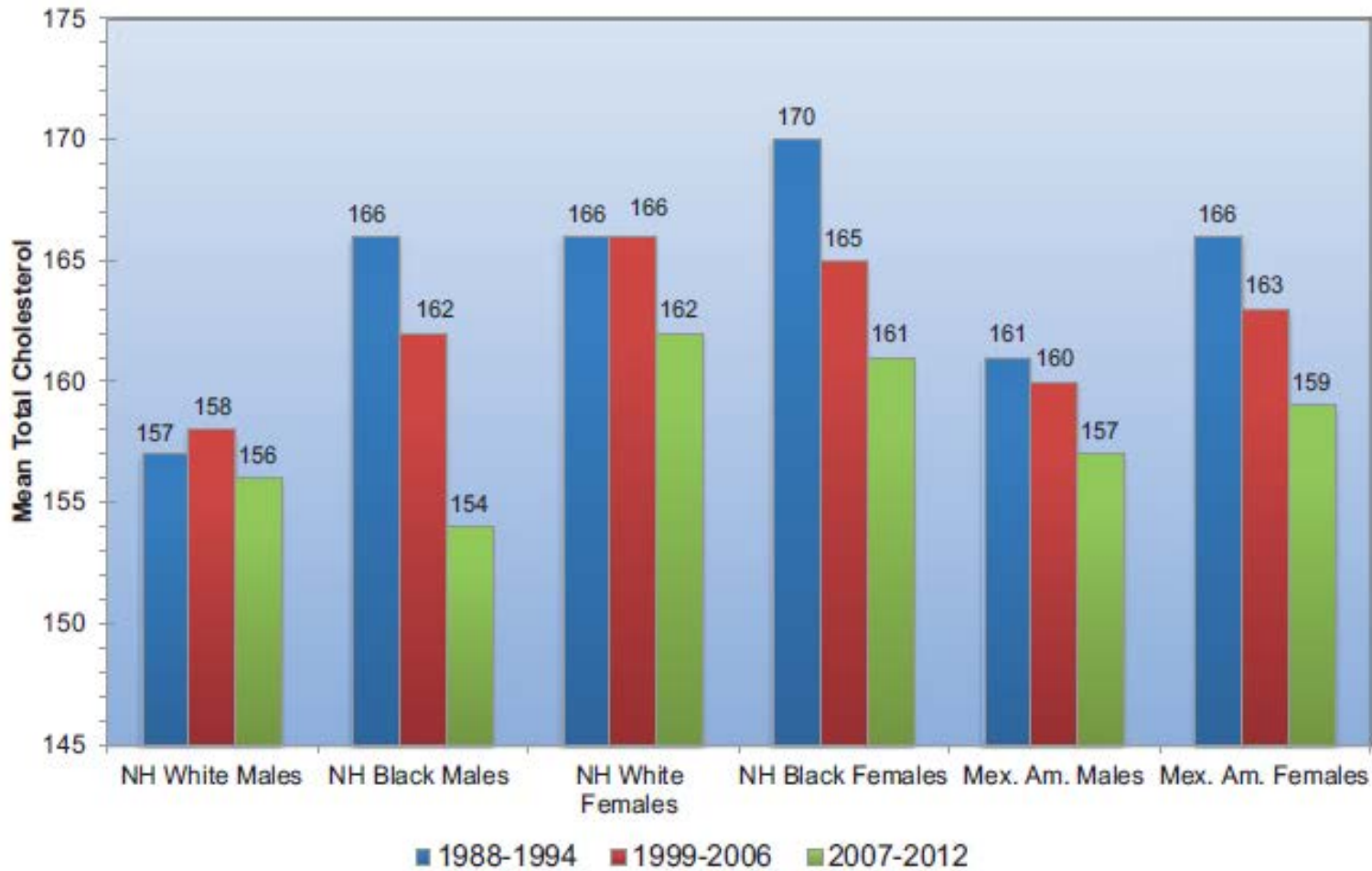
# Prevalence of High Blood Pressure in adults $\geq 20$ years of age (NHANES: 2009–2012)



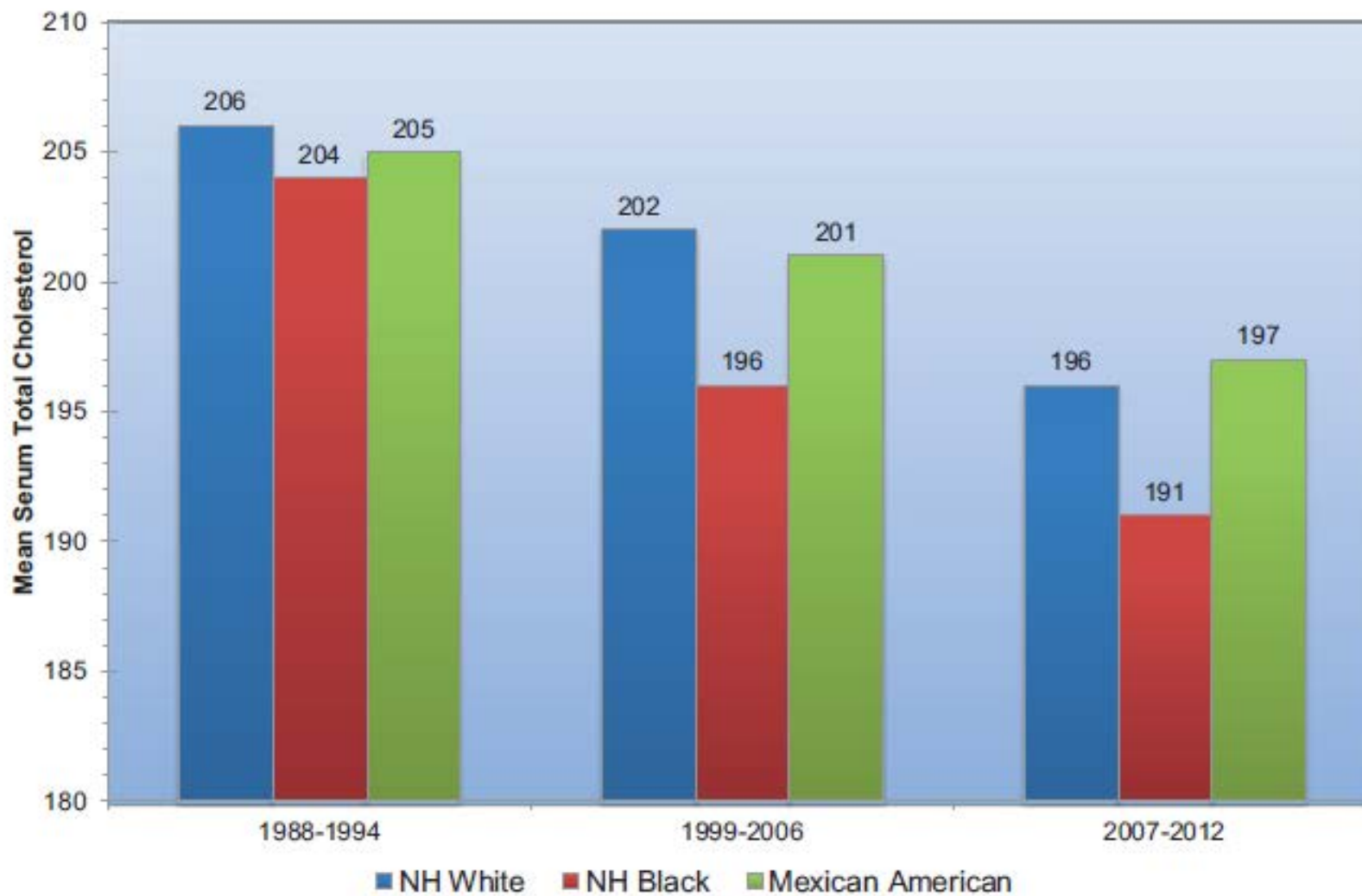
# Age-Adjusted Prevalence Trends for High Blood Pressure in Adults, $\geq 20$ years of age (NHANES 1988–1994, 1999–2006, and 2007–2012)



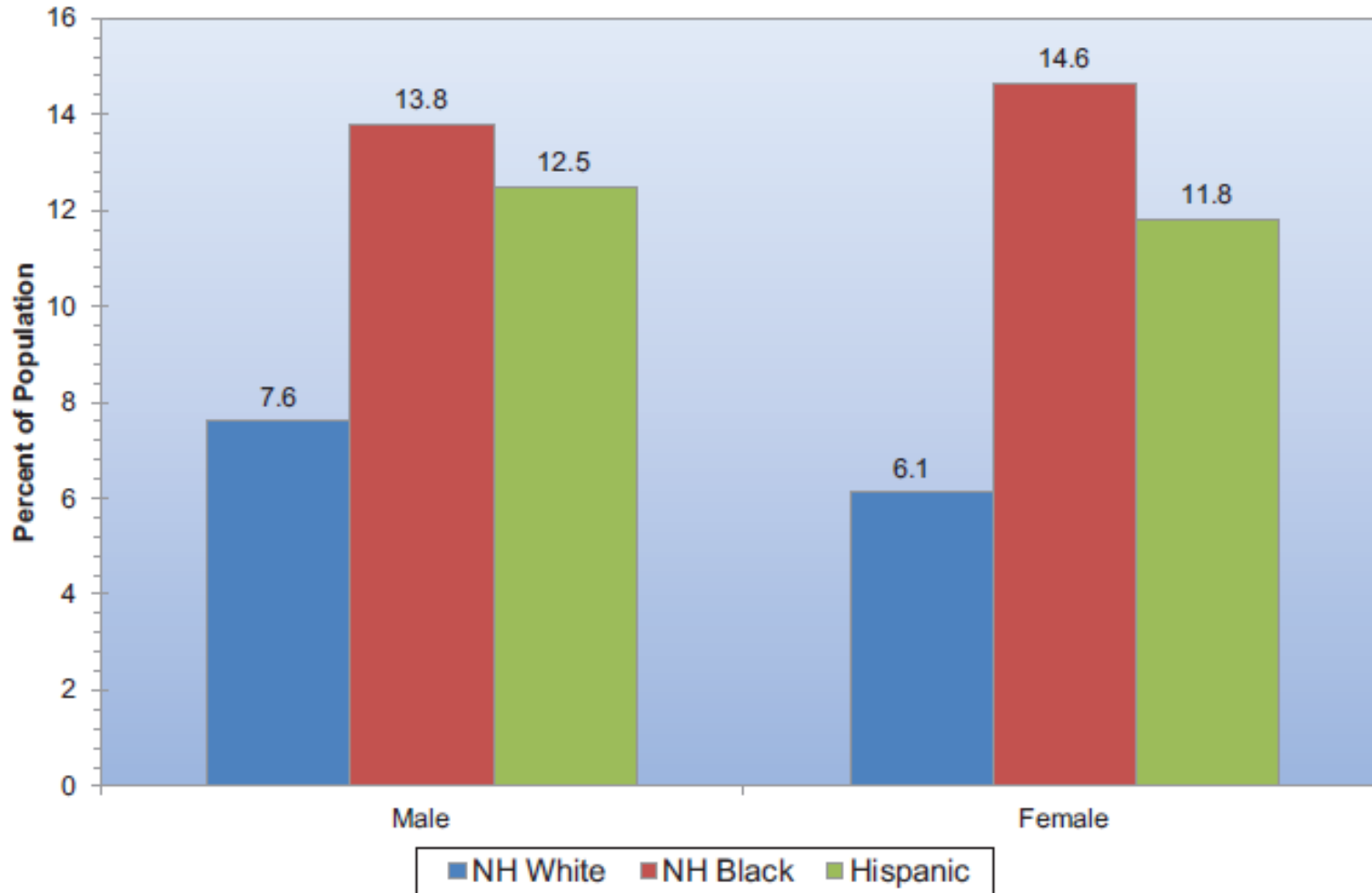
# Trends in mean total serum cholesterol among adolescents 12–17 years of age (NHANES: 1988–1994, 1999–2006, and 2007–2012)



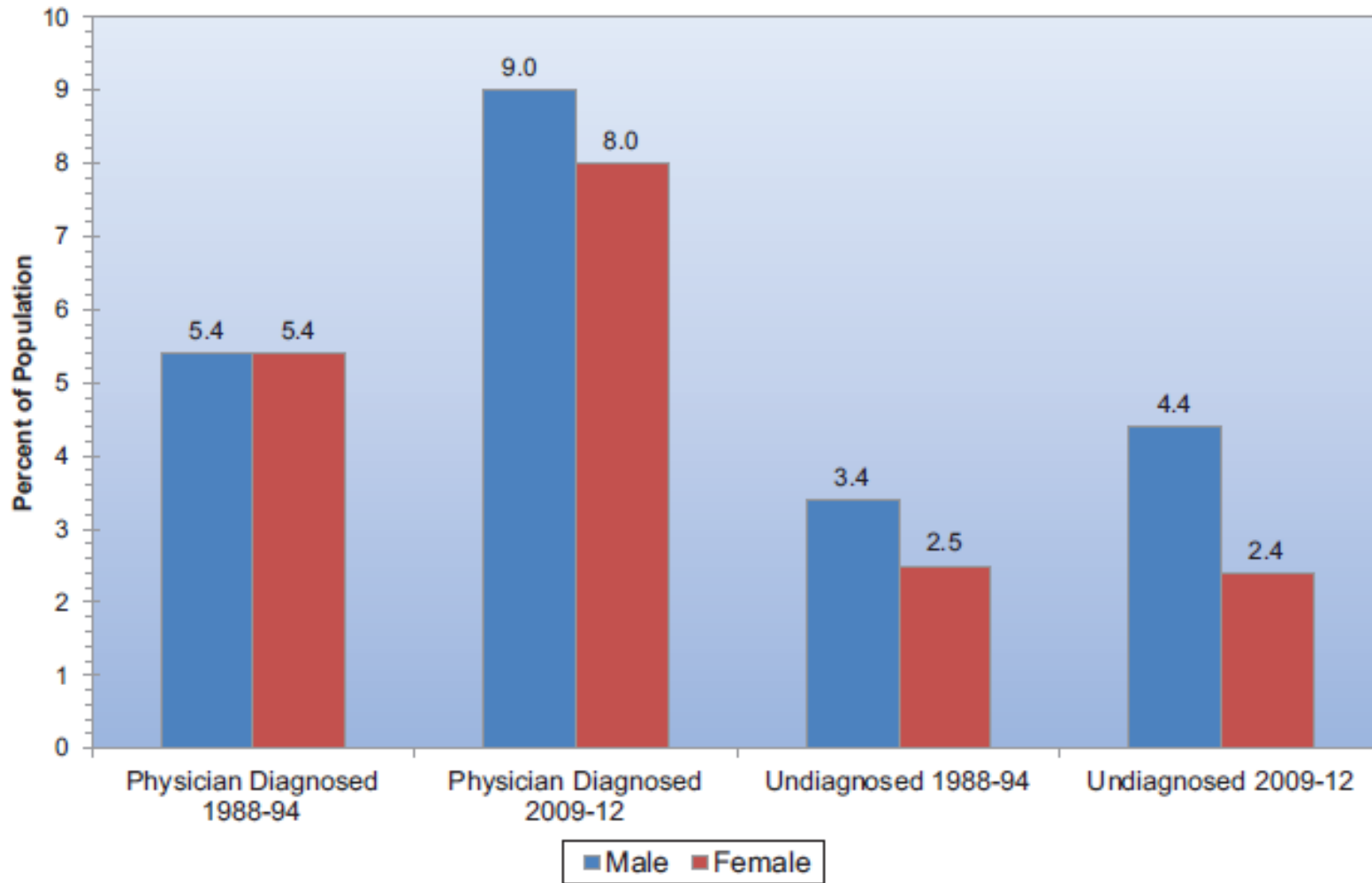
# Trends in mean total serum cholesterol among adults ages $\geq 20$ (NHANES: 1988–1994, 1999–2006, and 2007–2012)



# Age-adjusted prevalence of physician-diagnosed diabetes in adults $\geq 20$ years of age (NHANES: 2009–2012)

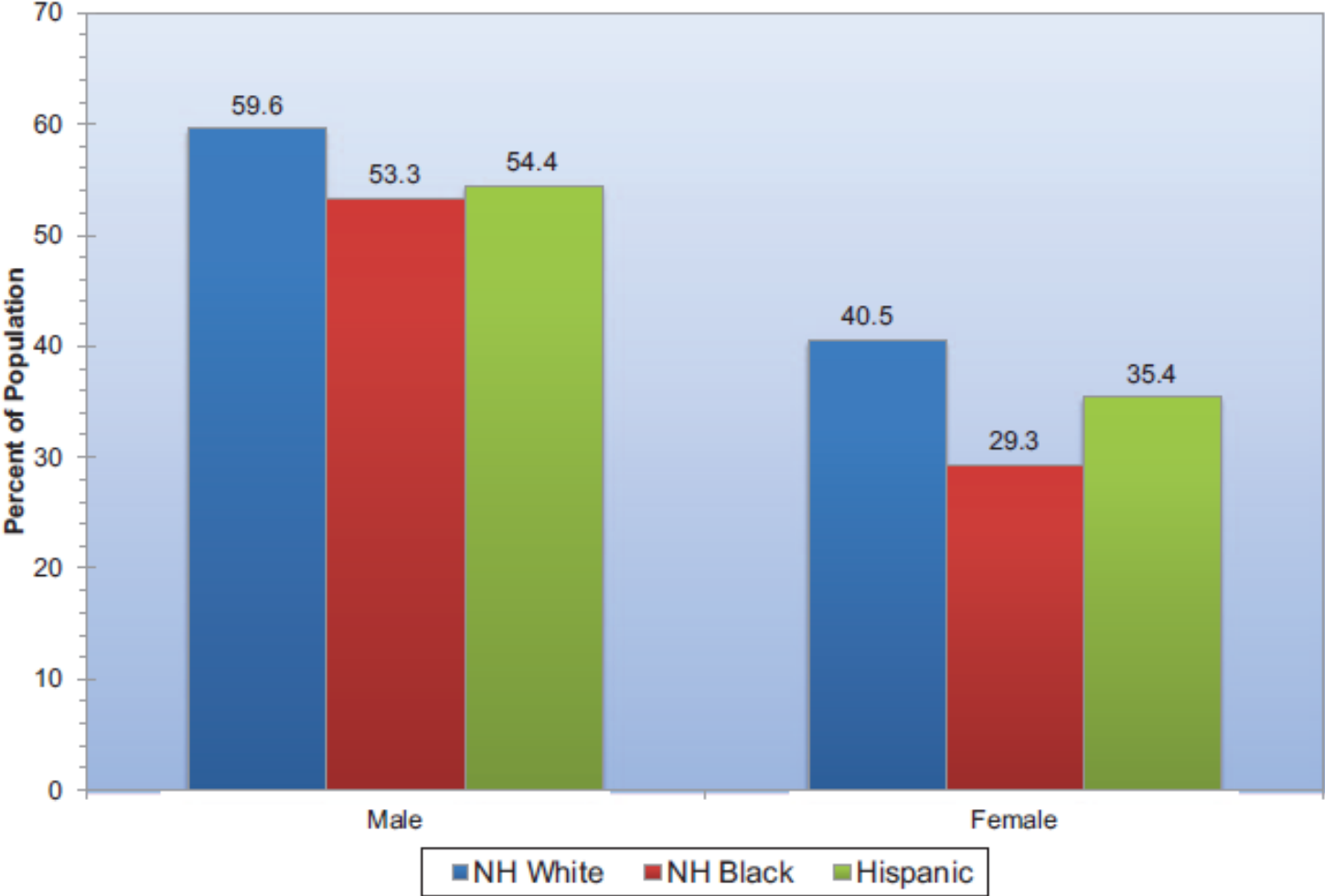


# Trends in diabetes prevalence in adults $\geq 20$ years of age (NHANES: 1988–1994 and 2009–2012)



# Prevalence of students in grades 9–12 who met recommended levels of physical activity on 5 of the past 7 days

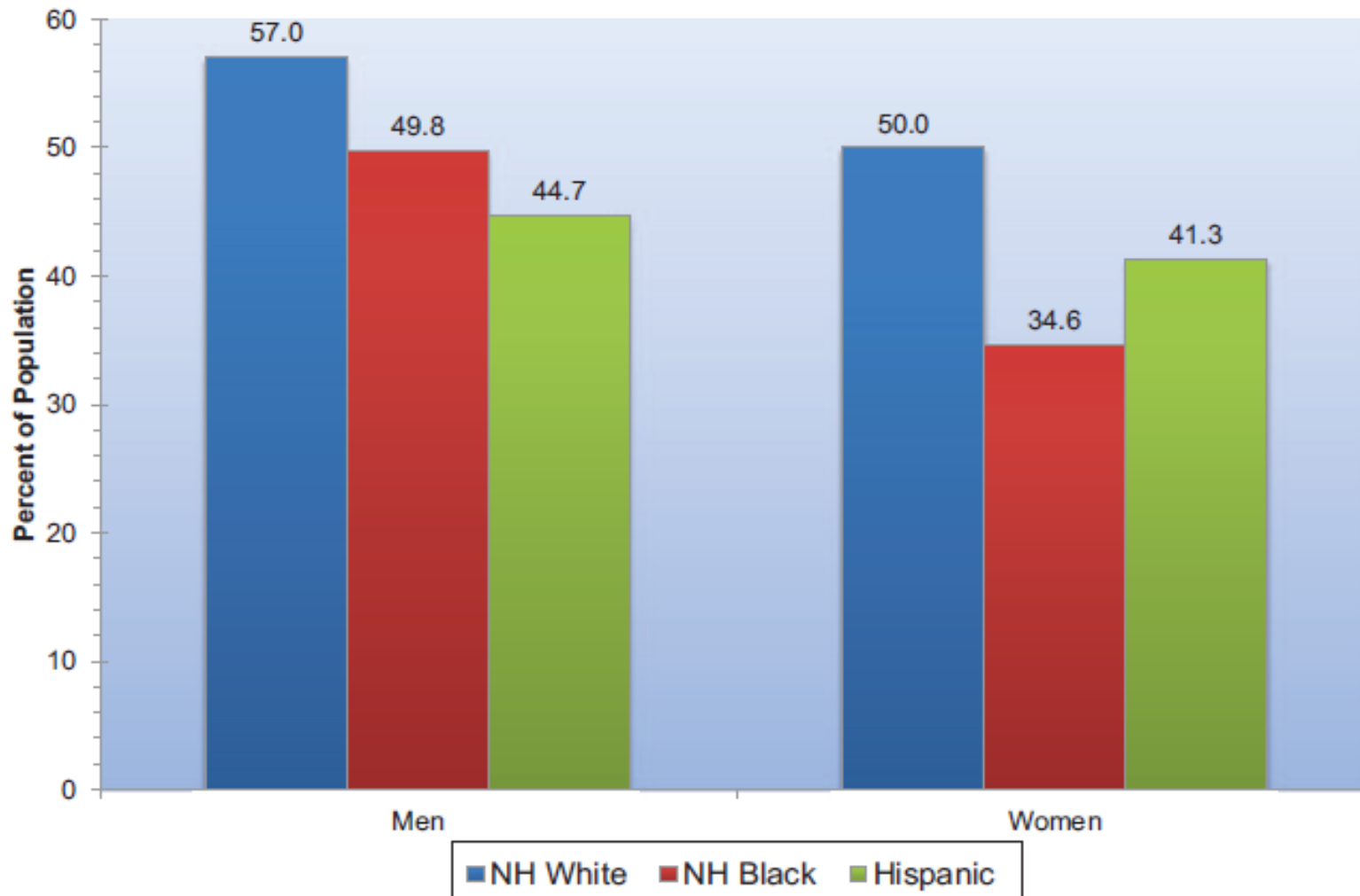
(Youth Risk Behavior Surveillance System, 2013)



NH indicates non-Hispanic.

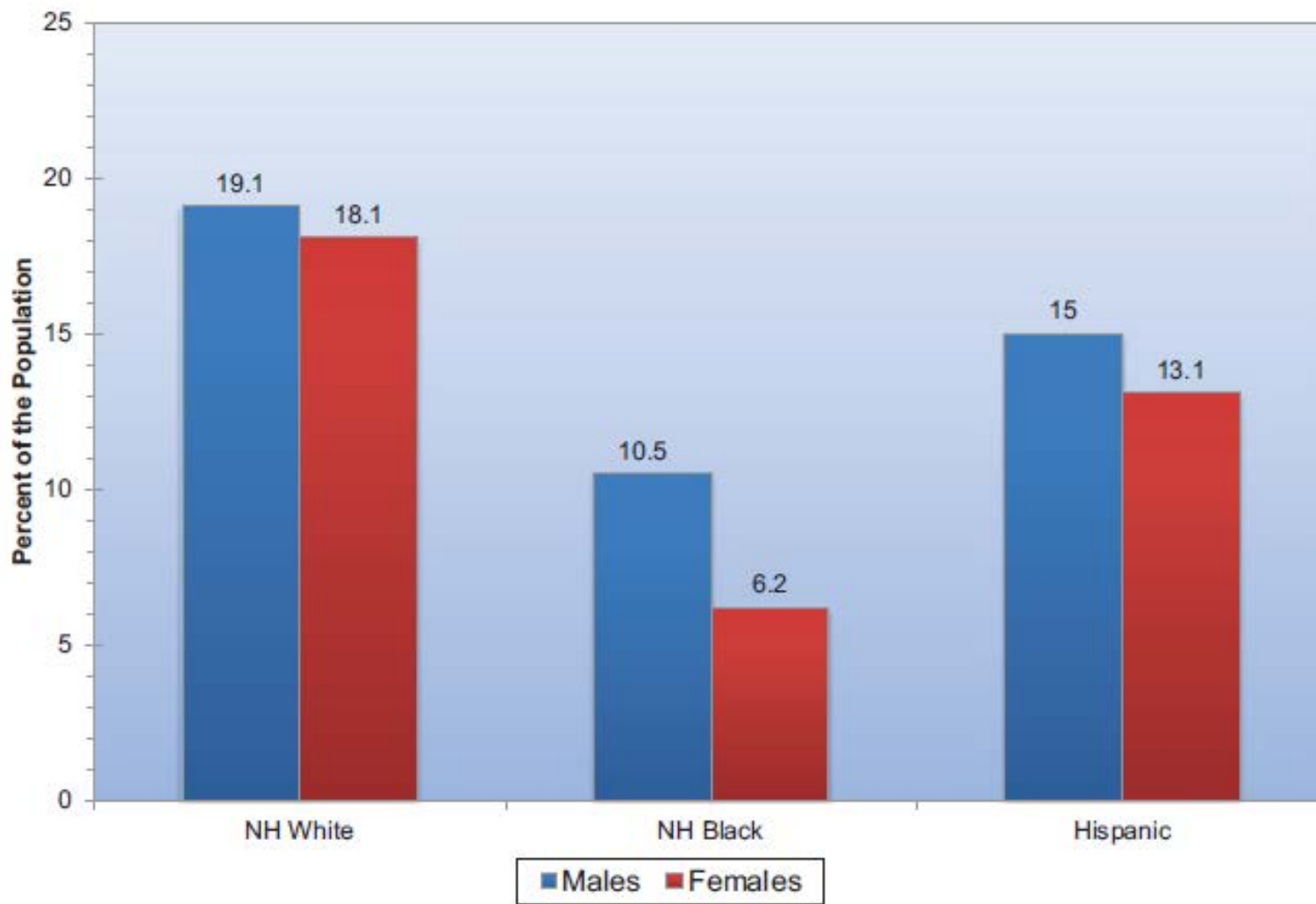


# Prevalence of meeting the 2008 Federal Physical Activity Guidelines among adults ≥18 years of age (National Health Interview Survey, 2013)



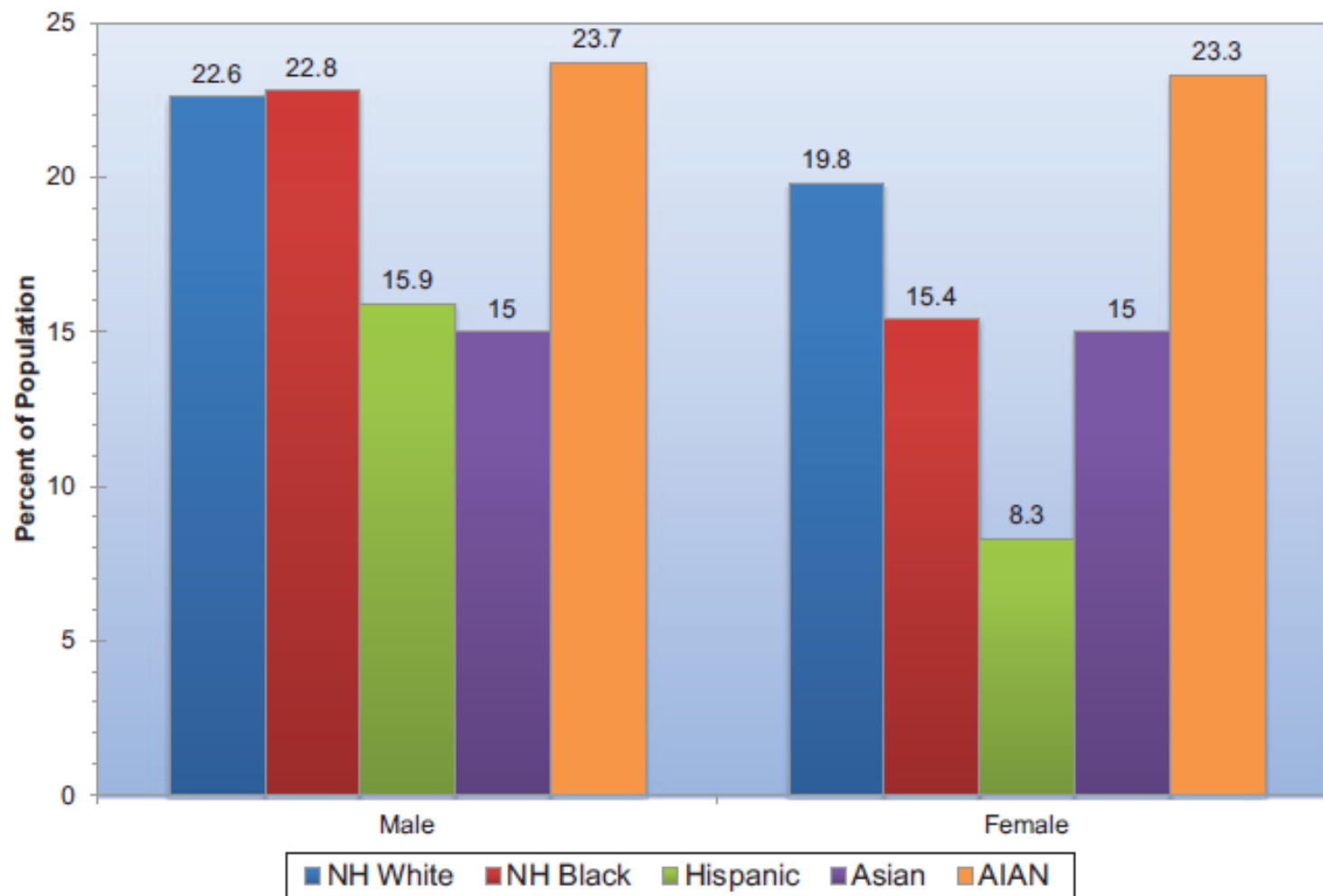
NH indicates non-Hispanic.

# Prevalence of students in grades 9 to 12 reporting current cigarette use (Youth Risk Behavior Surveillance System, 2013)



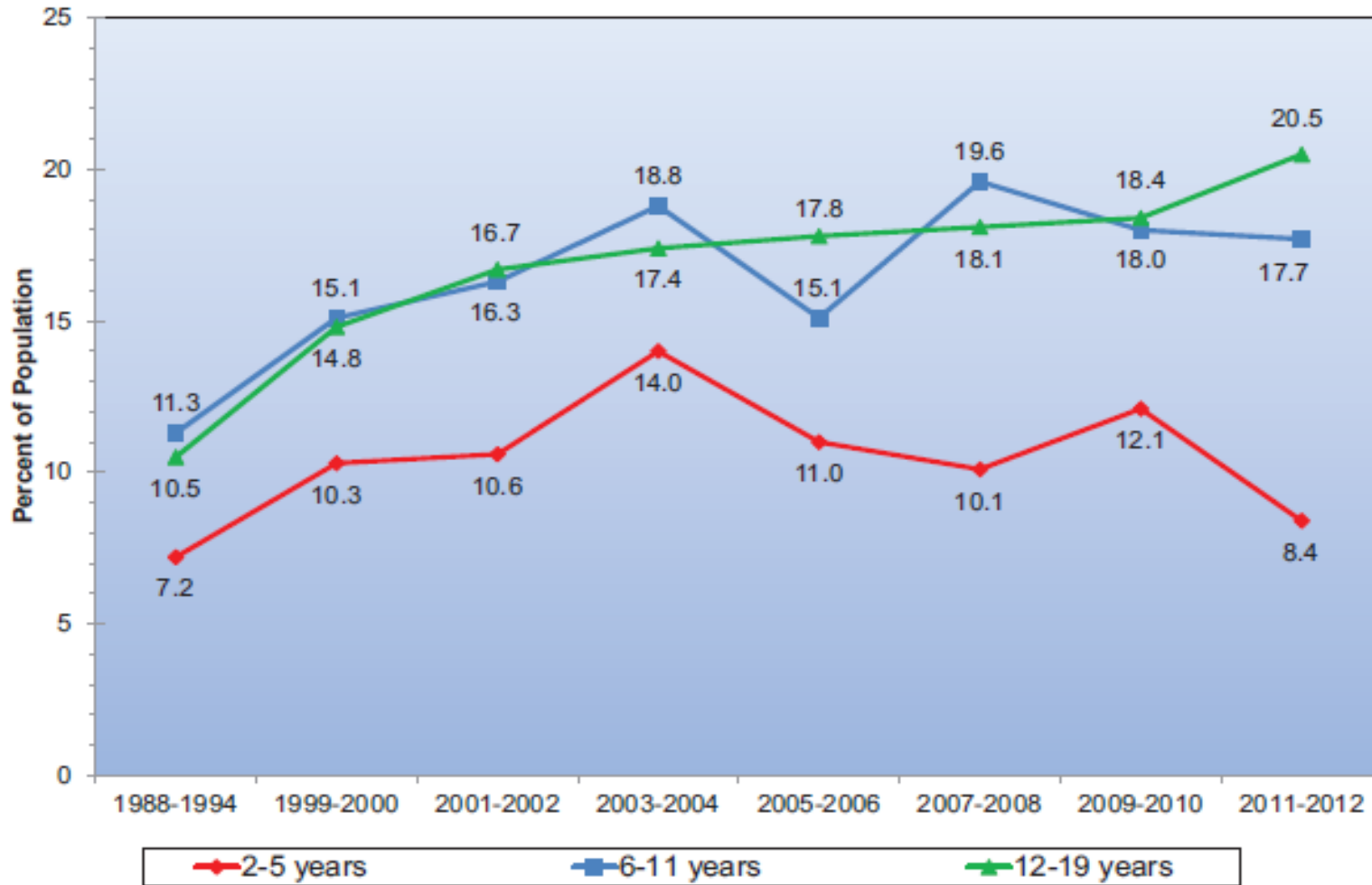
NH indicates non-Hispanic.

# Prevalence of current smoking for adults $\geq 18$ years of age (National Health Interview Survey, 2010-2012)

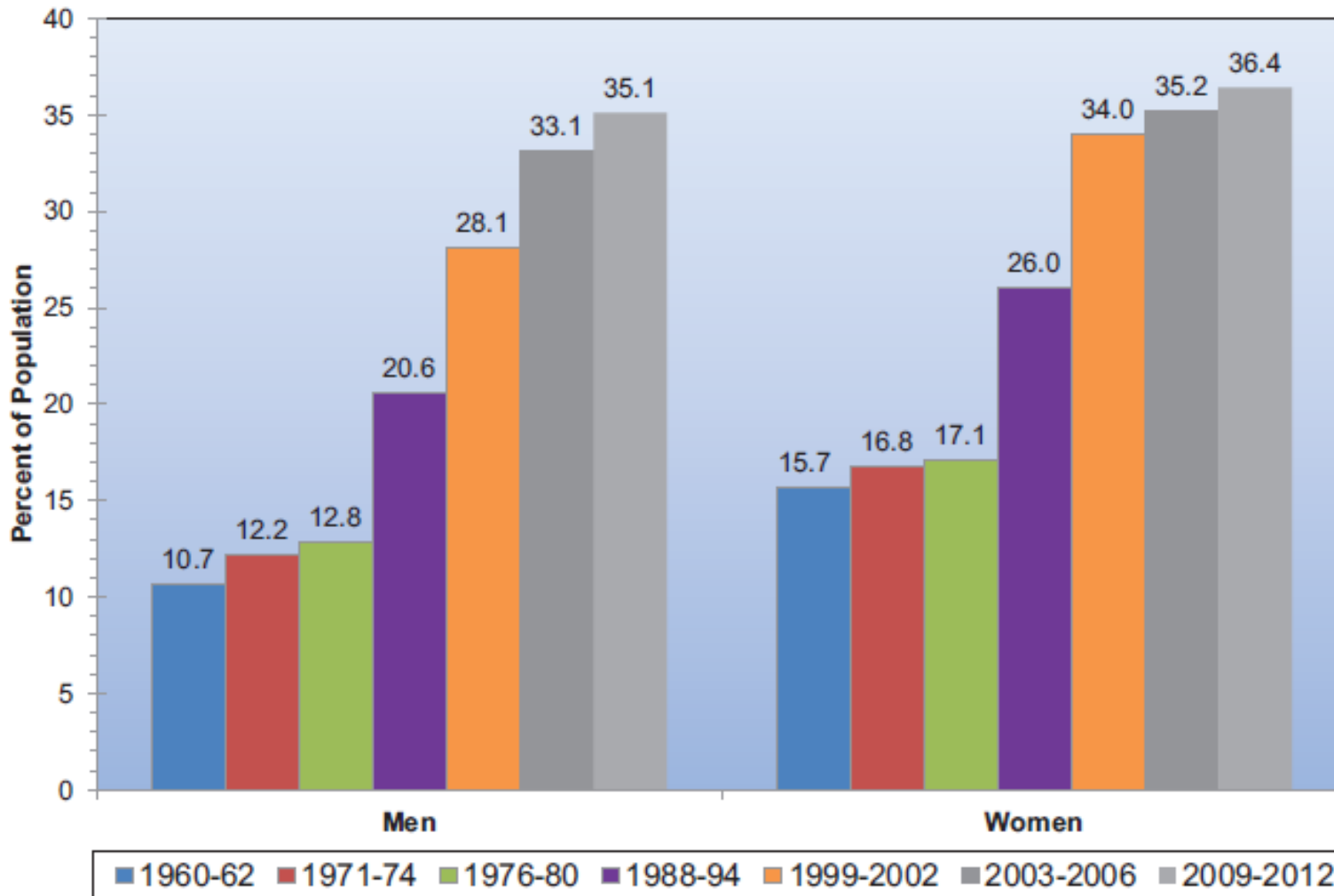


AIAN indicates American Indian or Alaska Native; NH, non-Hispanic.

# Trends in the prevalence of obesity among US children and adolescents



# Age-adjusted prevalence of obesity in adults 20–74 years of age



# Direct and indirect costs (in billions of dollars) of major cardiovascular diseases and stroke (United States: 2011)

